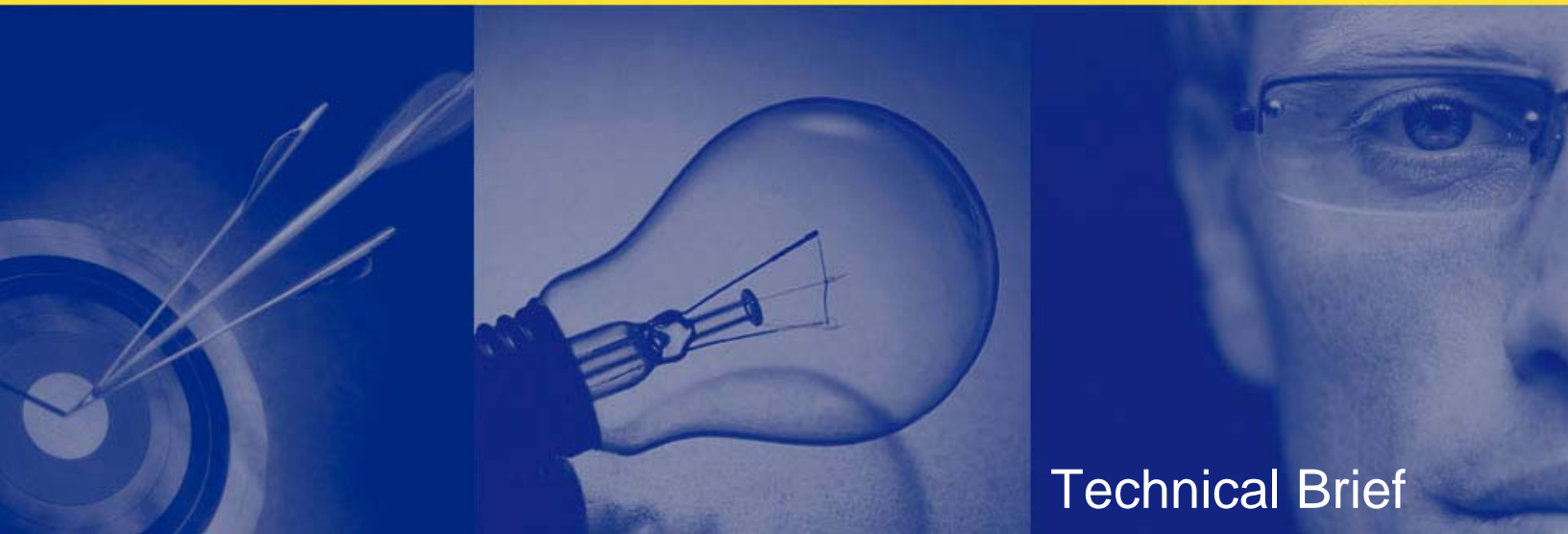


Quest and NetApp Integration

Rapid Provisioning with Flex Clone and vWorkspace

*Written by
Matthew Evans – Quest Software
Luke Reed - NetApp
October 2009*



© Copyright Quest® Software, Inc. 2009. All rights reserved.

This guide contains proprietary information, which is protected by copyright. The software described in this guide is furnished under a software license or nondisclosure agreement. This software may be used or copied only in accordance with the terms of the applicable agreement. No part of this guide may be reproduced or transmitted in any form or by any means, electronic or mechanical, including photocopying and recording for any purpose other than the purchaser's personal use without the written permission of Quest Software, Inc.

WARRANTY

The information contained in this document is subject to change without notice. Quest Software makes no warranty of any kind with respect to this information. QUEST SOFTWARE SPECIFICALLY DISCLAIMS THE IMPLIED WARRANTY OF THE MERCHANTABILITY AND FITNESS FOR A PARTICULAR PURPOSE. Quest Software shall not be liable for any direct, indirect, incidental, consequential, or other damage alleged in connection with the furnishing or use of this information.

TRADEMARKS

All trademarks and registered trademarks used in this guide are property of their respective owners.

World Headquarters
5 Polaris Way
Aliso Viejo, CA 92656
www.quest.com
e-mail: info@quest.com
U.S. and Canada: 949.754.8000

Please refer to our Web site for regional and international office information.



CONTENTS

CONTENTS	1
OVERVIEW	1
CONFIGURING THE NETAPP STORAGE CONTROLLER	2
CONFIGURING VMWARE VIRTUAL CENTER OR VSPHERE	5
CONFIGURING QUEST VWORKSPACE	7
CREATING DESKTOPS WITHIN QUEST VWORKSPACE	9
TROUBLESHOOTING	12
ABOUT QUEST SOFTWARE, INC.	14
CONTACTING QUEST SOFTWARE	14
CONTACTING QUEST SUPPORT	14
ABOUT NETAPP	15
CONTACTING NETAPP.....	15
CONTACTING NETAPP SUPPORT	15

OVERVIEW

This document covers the integration of NetApp Storage Systems with Quest vWorkspace in a VMware environment.

You are required to be running Quest vWorkspace 6.2 or later, available from <http://www.vworkspace.com>, and NetApp Data ONTAP 7.3.1 or later, available from <http://now.netapp.com>.

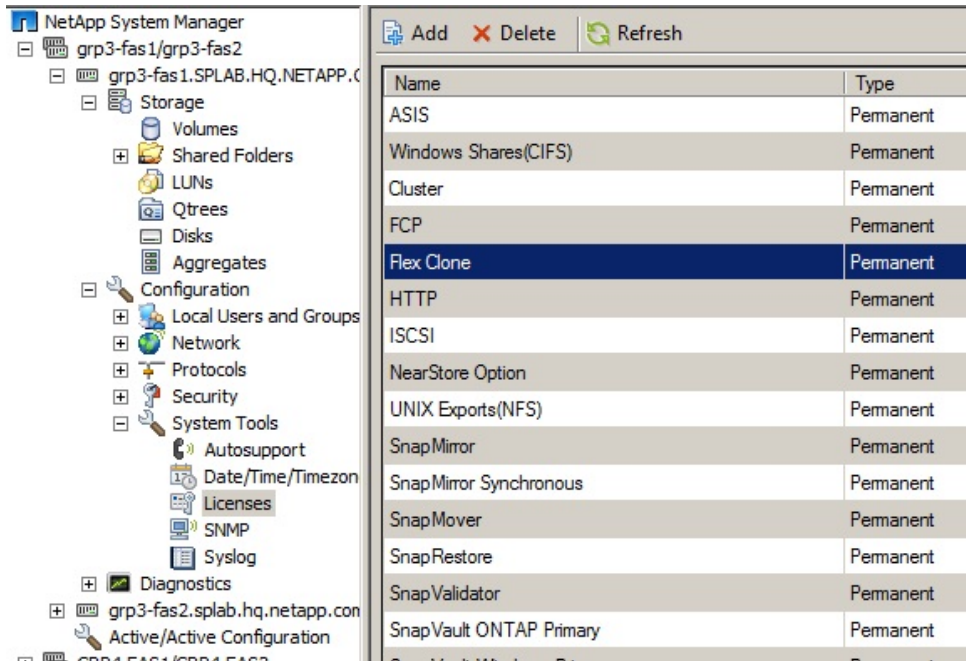
This whitepaper covers the configuration of the VMware and NetApp network that is typically required for this type of environment. NetApp has previously written a technical whitepaper that covers Virtual Desktop deployments on NetApp Storage Systems within a VMware environment. The NetApp TR3725 Whitepaper is available from <http://media.netapp.com/documents/tr-3725.pdf>.

This document assumes that an initial configuration has been applied to the NetApp controller in accordance with the software setup guide, available from <http://now.netapp.com>, and that Quest vWorkspace is installed and configured to communicate with VMware Virtual Center or vSphere.

The NetApp Storage Systems supported are FAS2000, FAS900, FAS3000, V3000, FAS3100, V3100, FAS6000, V6000 and R200 platforms.

CONFIGURING THE NETAPP STORAGE CONTROLLER

1. Open NetApp System Manager* to *Configuration -> System Tools -> Licenses* and ensure that you have applied ASIS, Unix Exports (NFS) and Flex Clone keys. Evaluation keys are on request, if required please contact your NetApp representative.



Name	Type
ASIS	Permanent
Windows Shares(CIFS)	Permanent
Cluster	Permanent
FCP	Permanent
Flex Clone	Permanent
HTTP	Permanent
ISCSI	Permanent
NearStore Option	Permanent
UNIX Exports(NFS)	Permanent
SnapMirror	Permanent
SnapMirror Synchronous	Permanent
SnapMover	Permanent
SnapRestore	Permanent
SnapValidator	Permanent
SnapVault ONTAP Primary	Permanent

2. NFS is enabled by default therefore we are required to create a Volume to store the Flex Clones. The Create NFS Datastore for VMware is initiated by *Storage -> Create NFS datastore*. The sizing of this volume depends on the size of the template, as well as sufficient free space for the clones. If you require further sizing guidance please contact your respective NetApp and Quest representatives. There are some examples below of the datastore wizard.

Create NFS Datastore for VMware® Wizard

Volume for NFS datastore
Choose a name and size for the volume, and select its containing aggregate.

Name:

Aggregate:

Size

Total volume size: Maximum 957.01 GB

Snapshot reserve (%):

Percentage of the total volume size to be reserved for storing Snapshot copies.

■ Data space: 50.00 GB
■ Snapshot space: 0.00 GB

< Back Next > Cancel

Create NFS Datastore for VMware® Wizard

ESX Server NFS Access
Specify ESX servers that will have access to the NFS datastore

ESX Servers

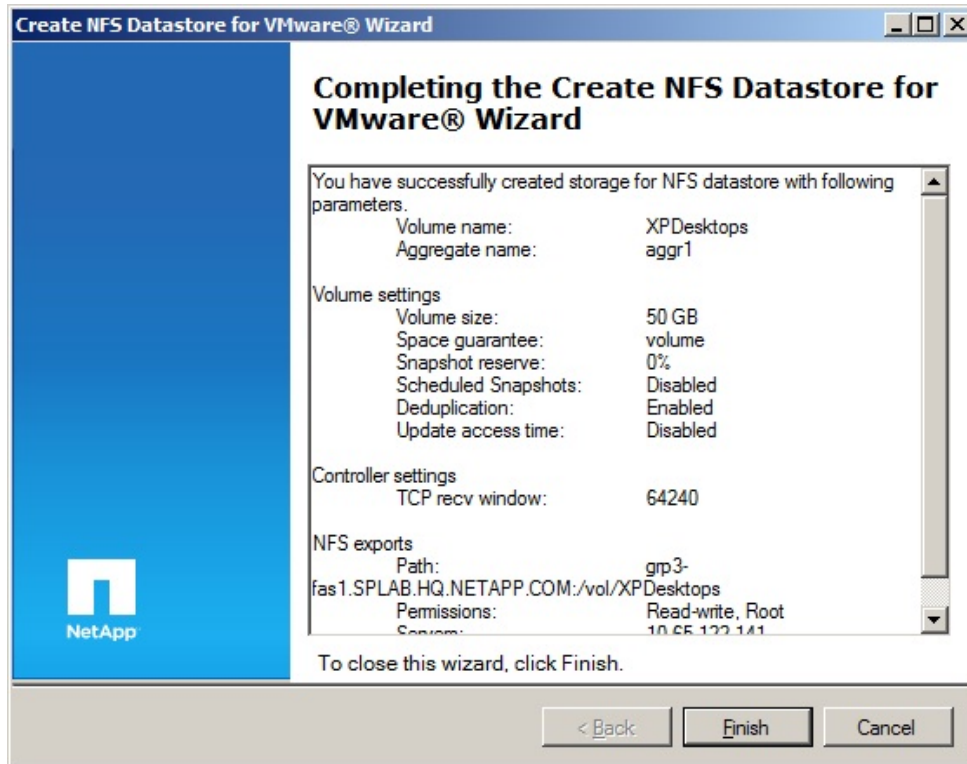
You can choose which ESX/ESXi servers and cluster nodes will have NFS access. Specify the VMkernel IP address for each host, or the VMkernel network for all of the hosts (example: 192.168.10.0/24). Each will receive read/write and root access to the datastore.

Address:

Add

Delete

< Back Next > Cancel



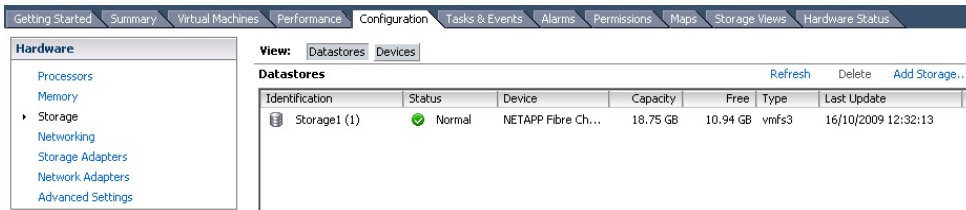
3. When NetApp Storage Controller configuration is complete, you may need to repeat these steps if you require additional datastores.

* NetApp Systems Manager is available for download, free of charge, from <http://now.netapp.com>.

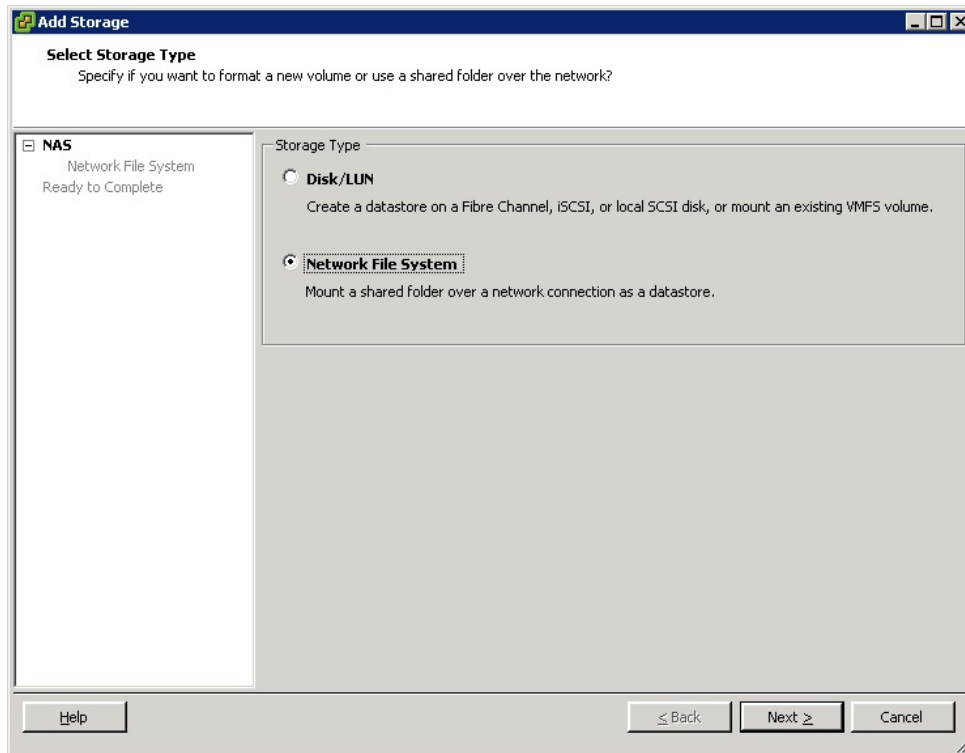
CONFIGURING VMWARE VIRTUAL CENTER OR VSPHERE

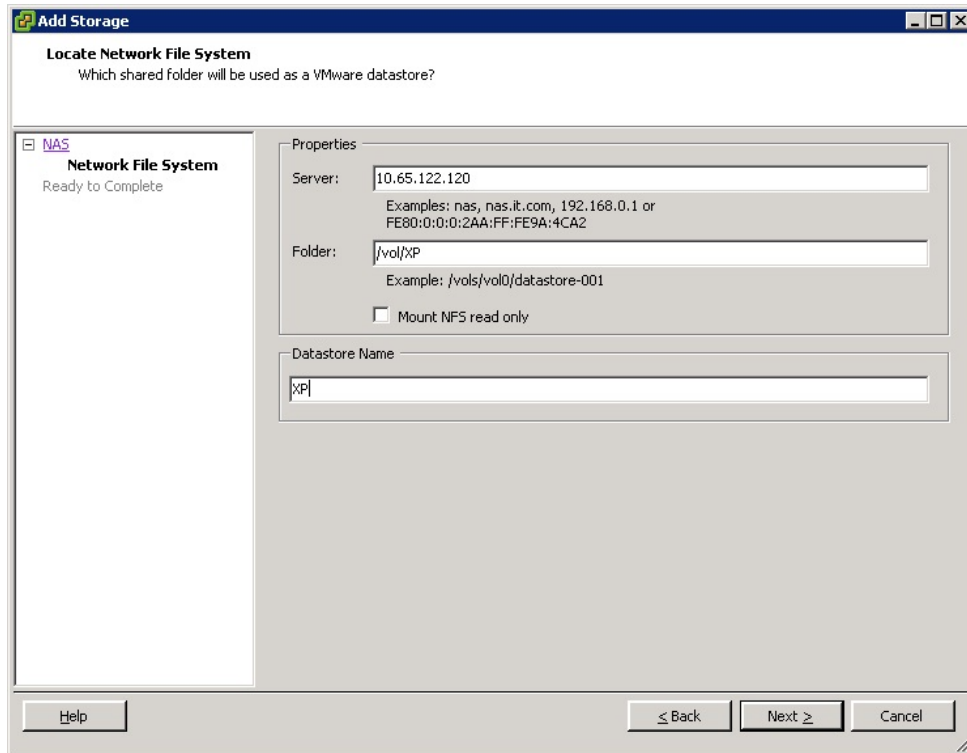
References to VC relate to either the Virtual Center or vSphere client. The assumption is made that VC is configured with ESX hosts, datacenter, and is licensed as required.

1. Ensure that you have created a VMkernel Port with connectivity to your NetApp Storage Contollers.
2. Within *Configuration* -> *Hardware* -> *Storage*, dick on the *Add Storage* link.



3. Follow the *Add Storage* wizard to attach the volume created on the NetApp Storage Controller. Refer to the example below.





It is recommended that the volume name matches the datastore name. In the example above this would be XP. It is also worth noting that you must use the IP address and not the storage server name. For further network information, please refer to TR3725 as referenced in the Overview.

4. Create a Virtual Machine with the necessary configuration, if you have not done so already. This will then be used to clone or convert to a template. Before cloning or converting to a template you need to move the virtual machine to the NetApp datastore, as created in the previous steps.

CONFIGURING QUEST vWORKSPACE

The following assumes that vWorkspace has been installed, licensed, and configured to communicate with VMware Virtual Center or vSphere.

1. Within the vWorkspace console, right-click Locations and select *Management Servers*. Highlight *Network Storage Server* and select *New*.
2. Define the NetApp Storage Server information in the Network Storage Server wizard. Access credentials can be set up on a per storage server basis in this wizard, or globally on the Management Servers window, Default Credentials section.

The screenshot shows a wizard window titled "New Network Storage Server". The left-hand navigation pane lists four steps: "Welcome", "Name", "Server", and "Credentials". The "Name" step is currently selected and highlighted. The main content area of the wizard is titled "Name" and contains the following text: "Specify a name for this network storage server." and "Specify a friendly name that will appear in the vWorkspace console." Below this text is a text input field with the label "Name:". At the bottom of the window, there are three buttons: "< Back", "Next >", and "Cancel".

New Network Storage Server

New Network Storage Server

Welcome
Name
Server
Credentials

Server
Define the network storage server.

Specify the system type and address of this network storage server.

System Type: NetApp FlexClone

IP Address:

< Back Next > Cancel

New Network Storage Server

NetApp - 10.65.122.125

Welcome
Name
Server
Credentials

Credentials
Specify the credentials for this network storage server.

Specify the user name and password required to access this server. Select 'Use Default Credentials' to use the default credentials specified on the management servers dialog.

Use Default Credentials

Name: ...

Password:

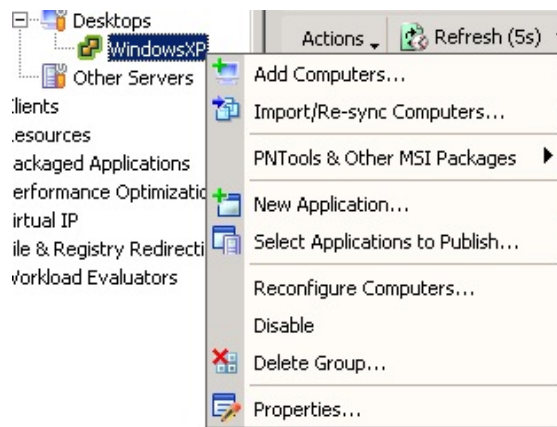
Confirm Password:

< Back Finish Cancel

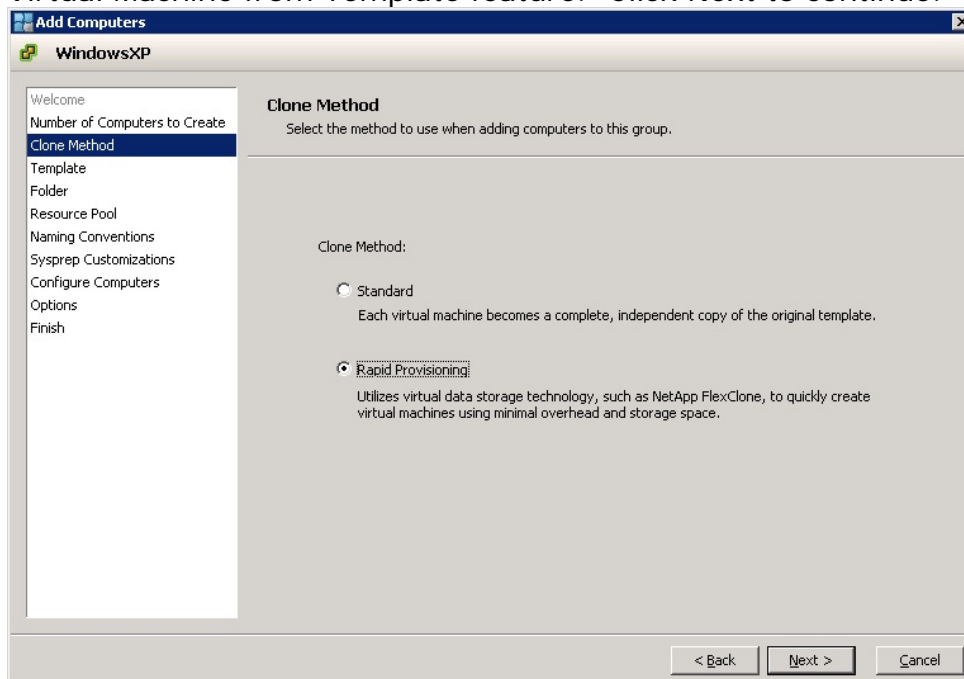
CREATING DESKTOPS WITHIN QUEST VWORKSPACE

The following steps assume that a desktop group has been created under *Locations* -> <location name> -> *Desktops* for the desktops that are to be added.

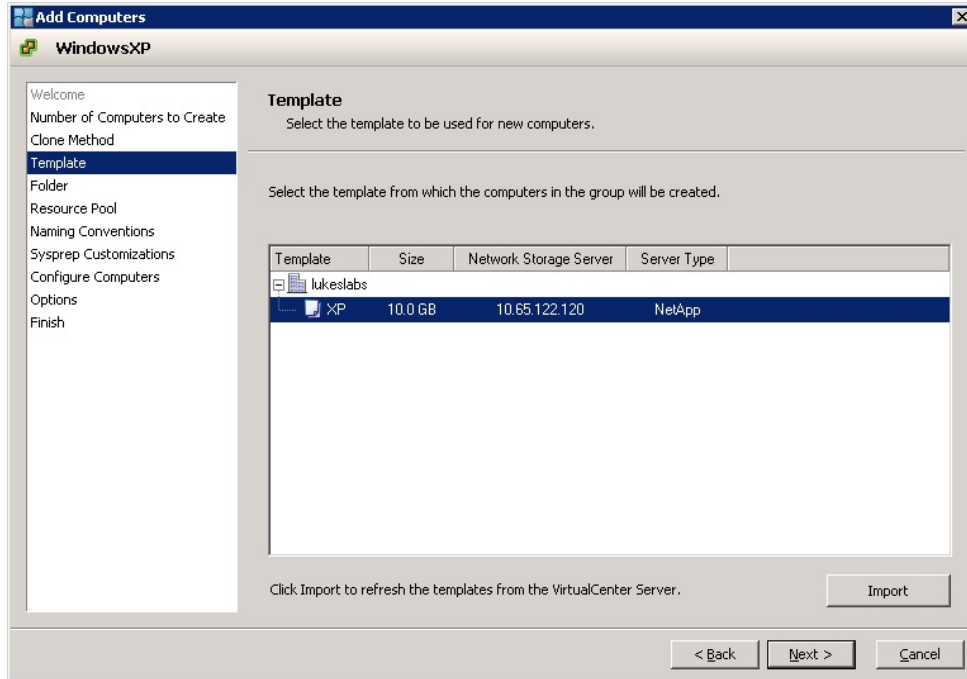
1. Highlight the desktop group name and then right-click and select *Add Computers*. You will then be presented with the Add Computers Wizard.



2. After the Welcome screen, enter the number of computers that are to be created. Once you have entered the number, click Next.
3. On the *Clone Method* window, select *Rapid Provisioning*. This initiates the NetApp Flex Clone method rather than the standard VMware create Virtual Machine from Template feature. Click Next to continue.

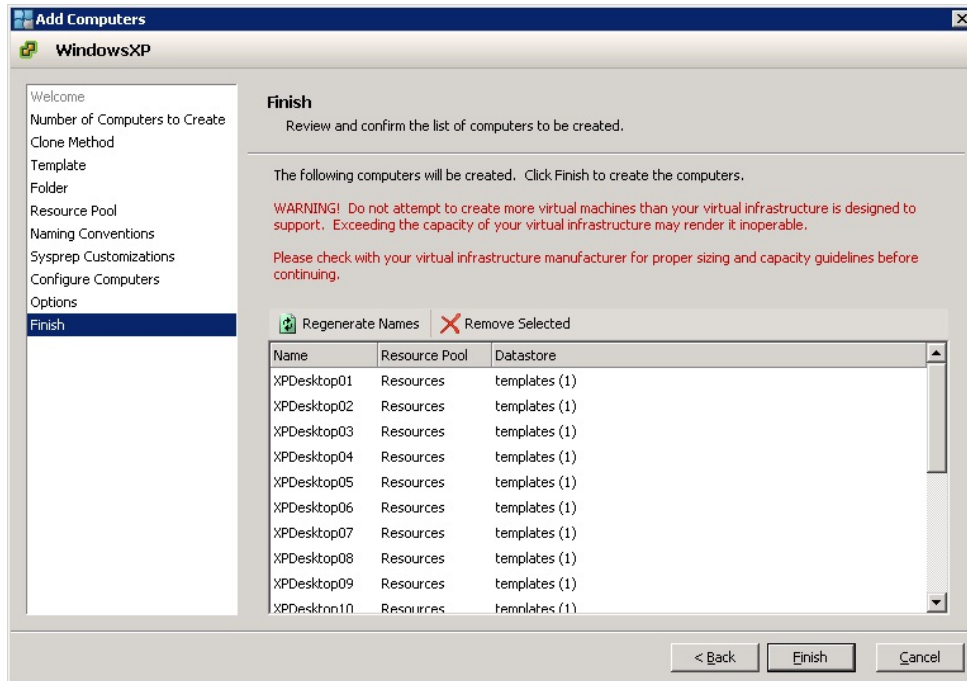


4. On the *Template* screen, click *Import* and then select the template. Verify that the server type is defined as NetApp. Click Next.



5. Continue through the wizard so that you can define the preferred VC Folder, Resource Pool, machine names, sysprep, virtual machine memory, and disk settings. You may need to click *Import* to retrieve the latest information from VC.

At the end of the wizard you are presented with a summary screen. At this stage it is worth ensuring you have sufficient storage for the number of virtual machines. See the example below.



- Once the desktops have completed, the console will look similar to the following.

Computer Name	Type	IP Address	Client Device	Client IP Address	Power State	Persistent Client
VMware VirtualCenter Server						
XPDesktop01	VMware VirtualCenter Server	10.65.122.30			Powered On	
XPDesktop02	VMware VirtualCenter Server	10.65.122.20			Powered On	
XPDesktop03	VMware VirtualCenter Server	10.65.122.28			Powered On	
XPDesktop04	VMware VirtualCenter Server	10.65.122.29			Powered On	
XPDesktop05	VMware VirtualCenter Server	10.65.122.27			Powered On	
XPDesktop06	VMware VirtualCenter Server	10.65.122.22			Powered On	
XPDesktop07	VMware VirtualCenter Server	10.65.122.25			Powered On	
XPDesktop08	VMware VirtualCenter Server	10.65.122.26			Powered On	
XPDesktop09	VMware VirtualCenter Server	10.65.122.24			Powered On	
XPDesktop10	VMware VirtualCenter Server	10.65.122.23			Powered On	

TROUBLESHOOTING

The following section provides solutions to error messages that can be generated by this integration if not configured correctly.

Error: Within the Quest Console, when completing the *Add Computers* wizard, the *Template* window shows the template as *Server Not Defined* and not NetApp as expected.

Solution: This is most likely caused by the datastore being configured in Virtual Center or vSphere with the NetApp Storage Server name. It needs to be the IP address.

Error: When provisioning new desktops the message "Clone of "Datacenters/DC Name/vm/Template/" to "NewVMName" failed: Caught NetApp copy exception outside of first attempt" appears.

Solution: The probable cause is that a folder matching the target VM name already exists in Volume.

Error: When provisioning new desktops, the job starts, however fails immediately displaying "Clone of 'Datacenters\DC Name\vm\XP\' to 'XPDesktop01' failed " in the vWorkspace console. In the example error, XP is the template and XPDesktop01 is the target Virtual machine.

Solution: This error could be generated for a number of reasons; the most likely is the NetApp Storage Server credentials. To understand the error, enable the log file by right-clicking the broker server name in the vWorkspace console and select Properties. On the Logging tab you can define the location and file name. Remember to switch off logging once you have generated the error.

If the error relates to the NetApp credentials, the error in the log will be similar to "Clone of "Datacenters/DC Name/vm/XP/" to "XPDesktop01" failed: Failed to get VM template info! Error: NetApp filer: 192.168.1.120 has not been connected. Call SetNaFiler() first". To resolve this, check the credentials either specifically for the filer or the default credentials in *Locations -> Management Servers -> Network Storage*.

Error: When provisioning new desktops, the job starts, however, fails immediately displaying "Clone of 'Datacenters\DC Name\vm\XP\' to 'XPDesktop01' failed: Object reference not set to an instance of an object" in the vWorkspace console. In the example, error XP is the template and XPDesktop01 is the target Virtual machine. If you were to enable logging in vWorkspace you would see the same error message in the log file.

Solution: Typically this error is generated if the Flex Clone license does not exist on the NetApp Storage Controller.

If you experience any errors that are covered in this section, please contact the respective support organizations. Details for Quest and NetApp support can be found on the subsequent pages.

ABOUT QUEST SOFTWARE, INC.

Quest Software, Inc. delivers innovative products that help organizations get more performance and productivity from their applications, databases and Windows infrastructure. Through a deep expertise in IT operations and a continued focus on what works best, Quest helps more than 50,000 customers worldwide meet higher expectations for enterprise IT. Quest Software can be found in offices around the globe and at www.quest.com.

Contacting Quest Software

Phone: 949.754.8000 (United States and Canada)
Email: info@quest.com
Mail: Quest Software, Inc.
World Headquarters
5 Polaris Way
Aliso Viejo, CA 92656
USA
Web site www.quest.com

Please refer to our Web site for regional and international office information.

Contacting Quest Support

Quest Support is available to customers who have a trial version of a Quest product or who have purchased a commercial version and have a valid maintenance contract. Quest Support provides around the clock coverage with SupportLink, our web self-service. Visit SupportLink at <http://support.quest.com>

From SupportLink, you can do the following:

Quickly find thousands of solutions (Knowledgebase articles/documents).

- Download patches and upgrades.
- Seek help from a Support engineer.
- Log and update your case, and check its status.

View the ***Global Support Guide*** for a detailed explanation of support programs, online services, contact information, and policy and procedures. The guide is available at: http://support.quest.com/pdfs/Global_Support_Guide.pdf.

ABOUT NETAPP

At NetApp, we bring together the world's most creative and dedicated people to help you affordably store, manage, protect, and retain one of your most precious assets—your data. We've built a reputation for innovative problem solving by creating products and solutions that deliver efficiency savings and enable breakthrough business capabilities.

With NetApp you can cut your IT costs in half, use up to 80% less storage, defer data center expansion, and accelerate your time to market. For more information please visit www.netapp.com

Contacting NetApp

Phone: 877-263-8277 (United States and Canada)
Web site www.netapp.com
Contact: <http://www.netapp.com/us/contact-us/>

Please refer to our Web site for regional and international office information.

Contacting NetApp Support

It's available around the clock, every day. You can access this support by phone, on the Web, and on-site. So no matter if it's 2 a.m. in Belfast or Boston, we have on-duty support staff armed with the spare parts you need to keep your business up and running.

Available anytime and anywhere, NOW™ (NetApp on the Web) features an array of self-service tools, including online technical assistance, software downloads, online service contract and product management, training and product programs, and reseller and partner resources.

For contact information and local toll free telephone numbers for NetApp technical support, please visit the following site:
<http://www.netapp.com/us/support/ngs-contacts.html>